

Dell PowerConnect W-Series Instant Access Point Quick Start Guide

This Quick Start Guide will assist you to quickly connect and configure Dell PowerConnect W-Series Instant Access Point (IAP). To learn more about Dell PowerConnect W-Series Instant Access Points and for detailed configuration information, see the *Dell PowerConnect W-Series Instant Access Point User Guide*.

Getting Started

1. **Get an IP address**—You will require an IP address to connect to a network. To get an IP address from a DHCP server in your network:
 - a. Connect the Dell PowerConnect W-Series IAP to an intermediate gateway router or switch that has connectivity to the DHCP server.
 - b. Power on the IAP. The IAP receives an IP address provided by the switch or router. Power the IAP either by plugging to an Ethernet cable coming from a 802.3af Power over Ethernet (PoE) switch or device, or by connecting it to an AC adapter.

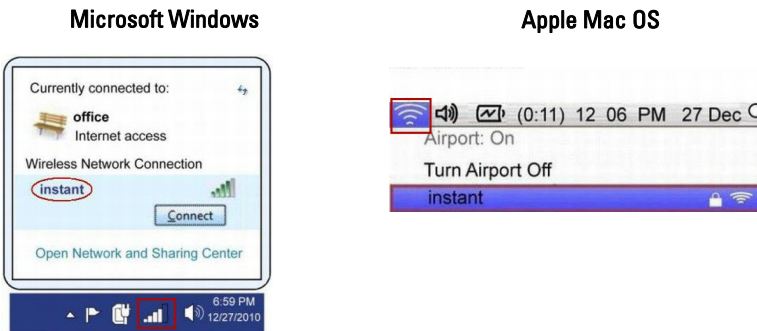
Note: After the IAP starts up, it will try to get an IP address from the DHCP server if static IP configuration is not available. If DHCP times out, a default IP within 169.254.x.y/16 subnet will be configured on the IAP.

Note: Administrators will not be able to utilize the redirection feature to access the login screen when using networks without DHCP and DNS on user defined SSIDs. The initial redirection on the Instant provisioning network is not affected.

2. **Connect to the provisioning Wi-Fi network**—The IAP advertises a provisioning network called **instant**. Connect a wireless enabled client to the provisioning Wi-Fi network. [Figure 1](#) shows how to find the instant wireless

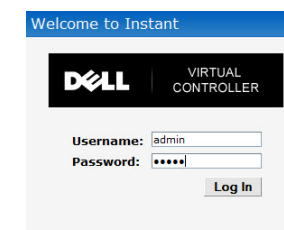
network using Windows 7 or Mac OS. Click the wireless network icon and select **instant network**.

Figure 1 Connect to the provisioning network in Microsoft Windows and Apple Mac OS)



3. **Log in to the Dell PowerConnect W-Series Instant Access Point WebUI**—Open a web browser and enter <http://instant.dell-pcw.com> to access the Dell Instant login screen. If you enter any other URL, you are redirected to the **Dell PowerConnect W-Series Instant Access Point** login screen. In the login screen, as shown in [Figure 2](#), enter the following credentials:
 - Username - **admin**
 - Password - **admin**

Figure 2 WebUI Login Screen



4. **Select the Country Code**—After you successfully log in to the WebUI, a Country Code drop-down list is displayed, as shown in [Figure 3](#). Select your country code from the drop-down menu and click **OK**.

Note: The Country Code is not displayed and cannot be set for IAPs designated for US, Japan, and Israel.

Figure 3 Country Code

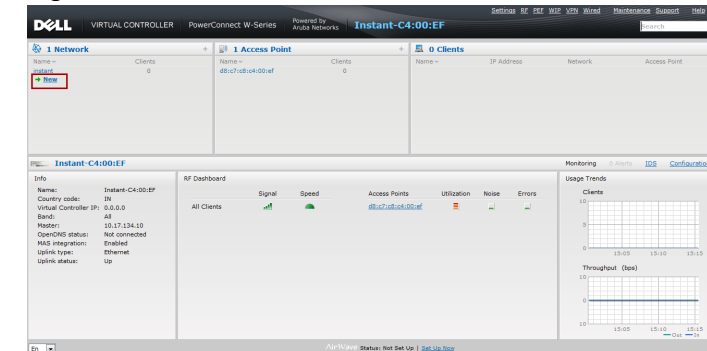


Creating a Network

Dell PowerConnect W-Series Instant Access Point user interface is a standard web-based interface that allows you to configure and monitor an IAP network.

5. In the **Network** window, click the **New** link, as shown in [Figure 4](#).

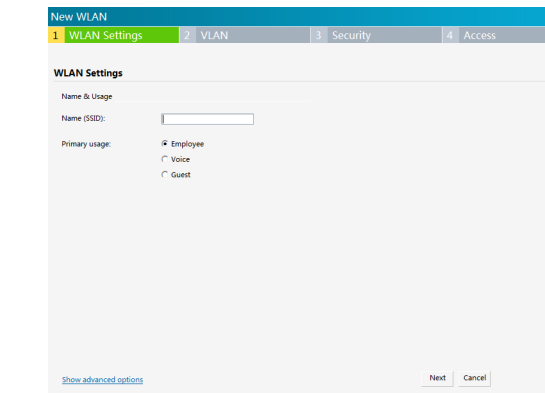
Figure 4 Instant User Interface



The **New WLAN** window appears, as shown in [Figure 5](#).

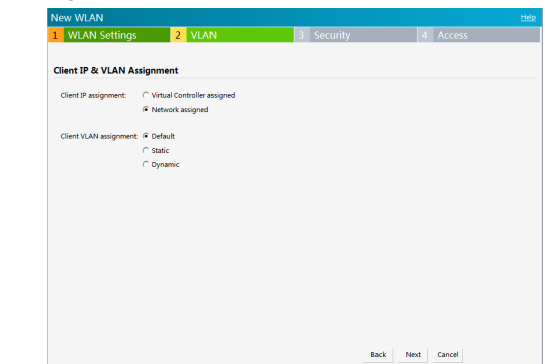
Note: For additional configuration parameters, refer to the *Dell PowerConnect W-Series Instant Access Point User Guide*.

Figure 5 New WLAN window



6. In the **WLAN Settings** tab, shown in [Figure 5](#), enter a name for the network in the **Name (SSID)** text box. Click **Next** to continue.
7. In the **VLAN** tab, shown in [Figure 6](#), select the required **Client IP** assignment and **Client VLAN** assignment options. Click **Next** to continue.

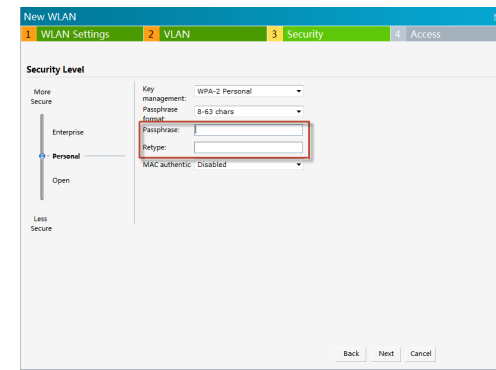
Figure 6 VLAN tab



8. In the **Security** tab, shown in [Figure 7](#), enter a **Passphrase** and re-enter passphrase in the **Retype** field. Click **Next** to continue.

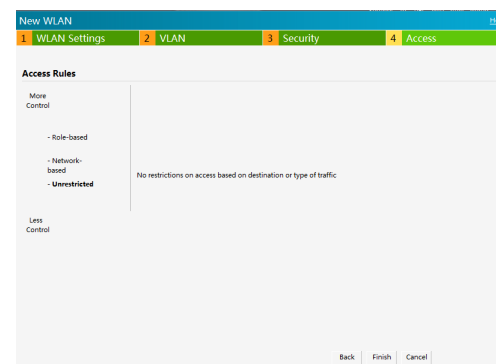
Note: Dell recommends that you note the passphrase for future use.

Figure 7 Security tab



9. In the Access tab, the default is the Unrestricted option.

Figure 8 Access tab



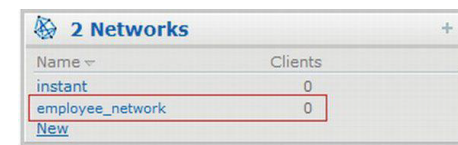
10. Click **Finish** to close the window. The new network that you created is now added to the Networks window as shown in [Figure 9](#).

Verifying the Operating Status

After setting up Dell PowerConnect W-Series Instant Access Point and adding a network, you can use the WebUI and the LEDs to verify the operating status of Dell PowerConnect W-Series Instant Access Point.

1. **Using the WebUI**—Verify the newly created network that is displayed in the Networks window, as shown in [Figure 9](#).

Figure 9 Networks window



2. Disconnect client from the **instant** provisioning network.
3. Connect client to the network you created, as described in [step 2](#) of [Getting Started](#).
4. Login to the Dell PowerConnect W-Series Instant Access Point WebUI, as described in [step 3](#) of [Getting Started](#).

The instant provisioning network is automatically deleted and should no longer be present.



Note: Dell recommends that you change the administrator login password. Refer to the *Dell PowerConnect W-Series Instant Access Point User Guide* in the section titled Management Authentication Settings.

- **Using LEDs**—Use the LEDs to verify the operating status of the IAP. The LED functionality is described in the *Install Guide* included with your Dell PowerConnect W-Series Instant Access Point.



Note: For **Uplink Connection**: Use the E0 port on W-IAP134/135 and W-IAP3WN/P for uplink connections to a switch or router.

For **Downlink Connection**: Use the E1 port on W-IAP134/135 for wired downlink connectivity. The E1 and E2 ports on W-IAP3WN/P support downlink connectivity.



Note: The E2 port on W-IAP3WNP has PoE power sourcing capability (PSE) to supply power to any compliant 802.3af powered class 0-4 device.


Converting an IAP to be Managed by a Mobility Controller

An IAP can be converted to operate as a Campus AP or Remote AP managed by a Dell Mobility Controller. For detailed instructions on the conversion process, see the *Dell PowerConnect W-Series Instant Access Point User Guide*.

Contacting Support

Web Support	
Main Site	dell.com
Support Site	support.dell.com
Dell Documentation	support.dell.com/manuals

Copyright

© 2012 Aruba Networks, Inc. Aruba Networks trademarks include  **airwave**, Aruba Networks®, Aruba Wireless Networks®, the registered Aruba the Mobile Edge Company logo, and Aruba Mobility Management System®. Dell™, the DELL™ logo, and PowerConnect™ are trademarks of Dell Inc.

All rights reserved. Specifications in this manual are subject to change without notice. Originated in the USA. All other trademarks are the property of their respective owners.

Open Source Code

Certain Aruba products include Open Source software code developed by third parties, including software code subject to the GNU General Public License (GPL), GNU Lesser General Public License (LGPL), or other Open Source Licenses. The Open Source code used can be found at this site:

http://www.arubanetworks.com/open_source

Legal Notice

The use of Aruba Networks, Inc. switching platforms and software, by all individuals or corporations, to terminate other vendors' VPN client devices constitutes complete acceptance of liability by that individual or corporation for this action and indemnifies, in full, Aruba Networks, Inc. from any and all legal actions that might be taken against it with respect to infringement of copyright on behalf of those vendors.

Dell PowerConnect W-Series Instant Access Point Quick Start Guide

